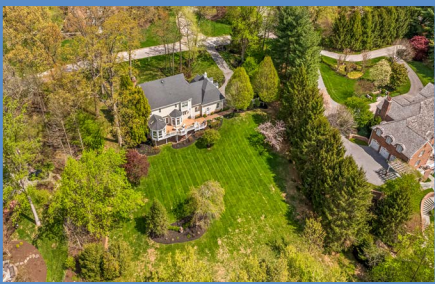


*Hubble
Bisbee*

CHRISTIE'S
INTERNATIONAL REAL ESTATE



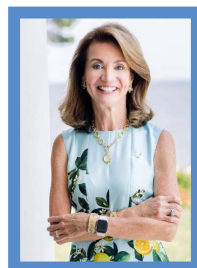
SPRINGHILL FARMS
29 SPRINGHILL FARM COURT



LOCATIONS

2330 W Joppa Road, Suite 104
Lutherville, MD 21093

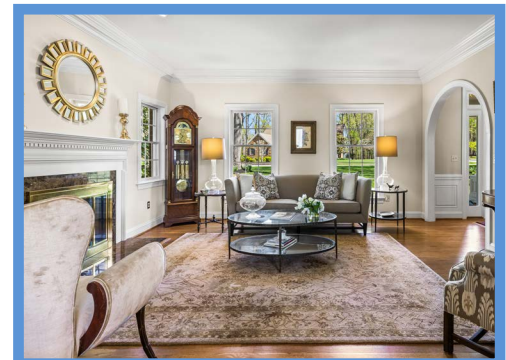
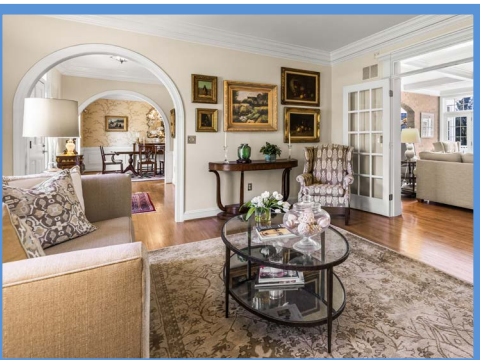
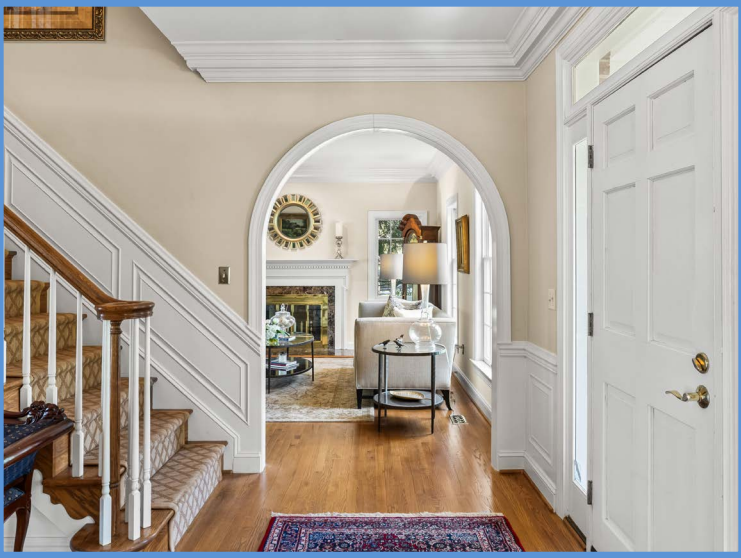
181 Harry S Truman Pkwy Ste 200
Annapolis, MD 21401



KAREN HUBBLE BISBEE

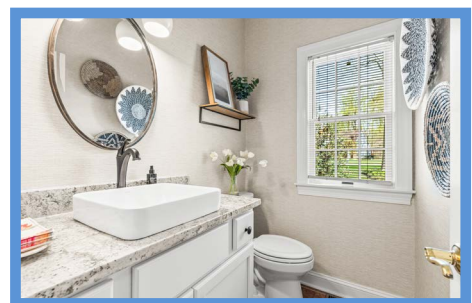
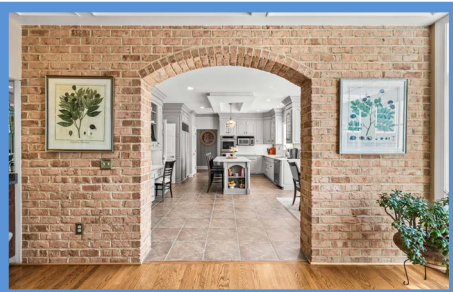
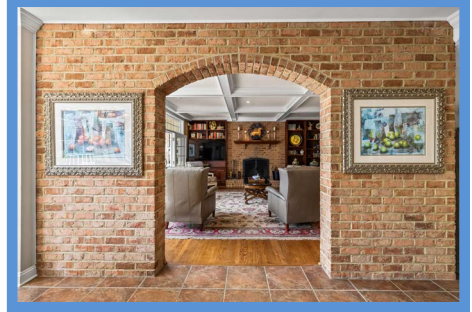
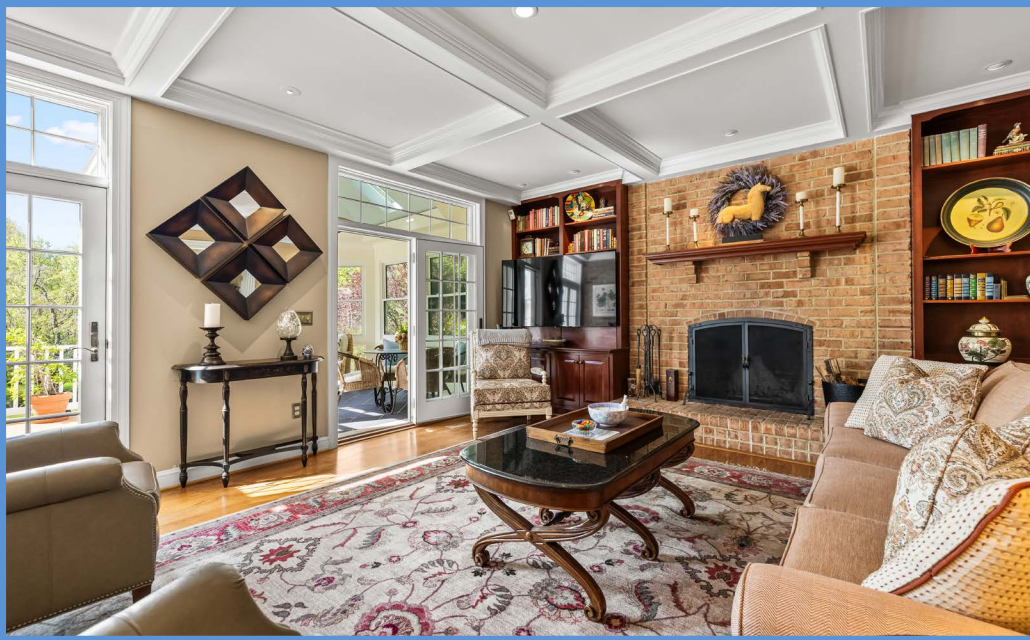
Principal, Associate Broker, ABR, GRI
Karen@HubbleBisbee.com
443-838-0438 (Mobile)
410-321-1411 (Office)

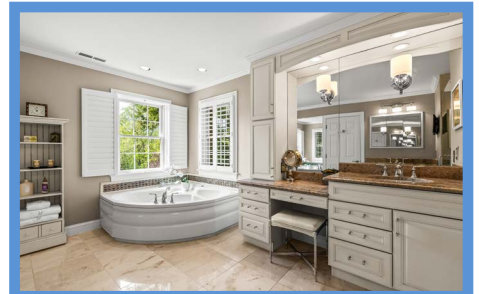
WWW.HUBBLEBISBEE.COM | (410) 321-1411 (OFFICE) | 













FOYER 13'5" X 12'3"

- Paneled entry door with transom and sidelights
- Hardwood flooring
- Classic open oak staircase with hardwood handrails, painted spindles and carpet runner
- Built-up crown molding
- Paneled wainscot including up staircase
- Brass/beveled glass ceiling light
- Access to Powder Room 1
- Cased archway to Kitchen
- Wide cased archways to Living Room and Dining Room

LIVING ROOM 15'7" X 14'3"

- Hardwood flooring
- Woodburning fireplace with colonial mantel, marble surround and hearth, glass doors

- Four windows
- Built-up crown molding
- Recessed light
- Architectural cased French doors with transom to Family Room
- Window treatments excluded

DINING ROOM 14'4" X 13'3"

- Hardwood flooring
- Two windows
- Built-up crown molding
- Ceiling panel molding
- Paneled wainscot
- French style 6-light chandelier
- Cased archway to Butler's Pantry and Kitchen
- Window treatments excluded

FAMILY ROOM 20'2" X 18'2"

- Hardwood flooring
- Coffered ceiling trimmed with crown molding
- Brick chimney wall with woodburning fireplace on raised hearth, wood mantel shelf and custom screen
- Custom cherry built-in bookcases flanking fireplace with base cabinets and Samsung wall mounted TV
- Cherry wet bar in mirrored alcove with glass shelving, granite counter, stainless steel prep sink and recessed light
- Two sets of Atrium doors with transoms to Sunroom and Deck
- Recessed lighting
- Built-in ceiling speakers

- Brick wall with archway to Kitchen

SUNROOM 14'5" X 11'9"

- Bordered slate finish ceramic tile floor
- Octagonal vaulted ceiling with 2 skylights
- Three walls of floor-length windows including full-width bay
- Glazed door to Deck
- Crown molding
- Double wall sconce light with frosted glass shades
- Ceiling fan with light

KITCHEN 21'3" X 20'11"

- Stone finish ceramic tile floor
- Tray ceiling above island
- Raised-panel wood cabinetry including island/breakfast bar, 42" wall cabinets, glass-door cabinets, planning desk, bookcases, lazy-Susan base cabinet and wall cabinet, roll-out trays, pull-out cutting board, pull-out trash/recycle bins and matching built-up crown trim
- Marble finish quartz counters
- Subway tile backsplashes
- Sub-Zero built-in refrigerator with matching front panels
- GE electric cooktop
- GE stainless steel built-in microwave
- KitchenAid stainless steel double wall oven
- KitchenAid stainless steel dishwasher
- Blanco oversized undermount black granite composite sink with gooseneck faucet and Insinkerator disposal
- Breakfast area in bay window with transoms, glazed door with transom to Deck and 6-light chandelier with shades
- Double window at sink
- Crown molding
- Walk-in pantry closet
- Recessed lighting
- Two pendant lights above island with glass shades
- Brick wall with archway to Family Room
- Access to Back Hall
- Cased archway to Foyer
- Double doors to Butler's Pantry

BUTLER'S PANTRY

7'8" X 3'1"

- Hardwood flooring
- Cabinetry matching Kitchen including illuminated glass-door cabinets
- Marble finish quartz counters
- Crown molding
- Recessed lighting
- Cased archway to Dining Room

POWDER ROOM 1

- Access from Foyer
- Hardwood flooring
- Kohler pedestal sink with polished nickel fittings, beveled mirror and overhead lighting
- Kohler flush
- Crown molding
- Exhaust fan

BACK HALL 12'3" X 12'2"

- Access from Kitchen
- Stone finish ceramic tile floor- same as Kitchen
- Beaded vertical wood paneled walls
- Built-up crown molding
- Carpeted back staircase with hardwood handrails
- Concealed staircase to Lower Level
- Cased portal to mudroom area with built-in storage bench with cushion, double closet, wall mount coat hook rack and exit door with 9-pane window
- Frosted glass ceiling lights
- Access to Laundry Room, Garage and Powder Room 2

LAUNDRY ROOM 12'3" X 5'9"

- Stone finish ceramic tile floor- same as Back Hall
- White recess-panel base cabinets, wall cabinets and storage cabinet
- Laminate counter
- Stainless steel laundry sink with mosaic tile backsplash
- Window
- Maytag washer and dryer
- Fluorescent light ceiling panel

POWDER ROOM 2

- Stone finish ceramic tile floor- same as Back Hall
- Vanity with granite top, ceramic sink, oval mirror and overhead lighting
- Kohler flush
- Window with wood mini-blind
- Exhaust fan

GARAGE 32'9" X 20'11"

- Oversize 3-car
- Automatic door openers
- Epoxy floor finish by Platinum Concrete Coatings
- Three windows
- Exit door with 9-pane window
- Wall cabinets

UPPER LEVEL

HALL 14'9" X 12'10"

- Landing for staircase with banister overlooks to Foyer
- Hardwood flooring
- Arched interior window to Primary Office
- Brass 12-light chandelier with shades
- Flows to carpeted passage with recessed lighting, back staircase with brass/glass pendant light, arched window in dormer recess, linen closet, two walk-in closets, 2 large storage rooms and step-down to Bedroom 4

PRIMARY BEDROOM

26'6" X 15'7"

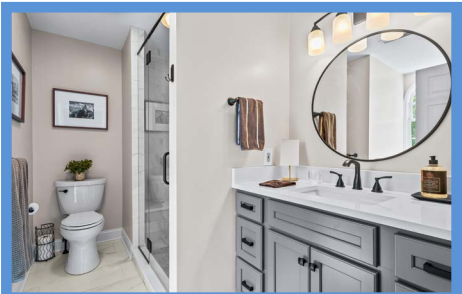
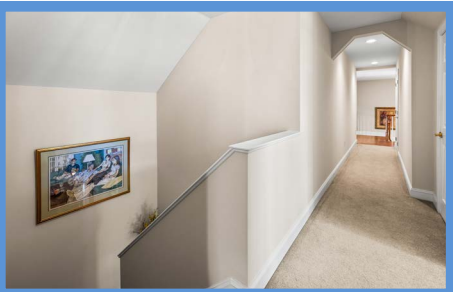
- Hardwood flooring
- Three windows with custom window treatments
- Built-up crown molding
- Two architecturally cased bookcases with base cabinets
- Passage to Primary Bath with linen closet and custom fitted walk-in closet (10' X 8') with wardrobe cabinetry by California Closets
- Double doors to Office

OFFICE 12'10" X 7'2"

- Hardwood flooring
- Glazed door to roof deck with sidelights
- Arched interior window overlooking main staircase
- Built-up crown molding

PRIMARY BATH 16'0" X 10'2"

- Marble floor
- Vanity/dressing table with granite tops, undermount sink, upper cabinet, plate glass mirrors, recessed lighting and 2 wall sconce lights with shades
- Additional vanity with granite top, undermount sink, mirrored medicine cabinet and overhead lighting



- Jetted spa tub in platform with mosaic tile backsplashes
- Marble shower stall with mosaic tile borders and glass door enclosure
- Water closet with Kohler flush and window
- Two windows at tub with plantation shutters
- Crown molding
- Recessed lighting
- Full-length dressing mirror
- Samsung wall mount TV

BEDROOM 2 15'11" X 12'7"

- Wall-to-wall carpeting
- Box-bay window with pleated shades and built-in window seat/storage bench with cushion
- Walk-in closet
- Ceiling fan with lighting
- Wall mount swing-arm lamp
- Access to hall Bath

BEDROOM 3 12'7" X 11'3"

- Wall-to-wall carpeting
- Two windows with pleated shades
- Double closet

HALL BATH 10'2" X 6'5"

- Stone finish ceramic tile floor and tub surround
- Vanity with quartz top, undermount sink, plate glass mirror, overhead lighting and mirrored medicine cabinet
- Tub/shower combination
- Kohler flush
- Window
- Ceiling light/exhaust fan
- Additional access from Bedroom 2

BEDROOM 4 21'0" X 13'6"

- Wall-to-wall carpeting
- Two arched windows in dormer recesses
- Study alcove
- Walk-in closet
- Ceiling fan with lighting
- Private Bath

BATH 10'4" X 10'2"

- Marble finish porcelain tile floor
- Vanity with quartz top, undermount sink, framed round mirror, overhead lighting and mirrored medicine cabinet
- Shower stall with subway tile walls, built-in bench, hex-tile floor, wall niche and glass door enclosure

- Kohler flush
- Built-in linen shelving
- Arched window in dormer recess
- Ceiling light/exhaust fan

LOWER LEVEL

HALL 17'8" X 7'11"

- Wall-to-wall carpeting including staircase access
- Storage closet
- Recessed light
- Utility/storage room with well water tank and conditioning system
- Flows to Recreation Room

RECREATION ROOM

23'5" X 21'4"

- Wall-to-wall carpeting
- Bay window
- Maple wet bar with base cabinets, art-glass inserts on 2 wall cabinets, stemware rack, stainless steel sink, laminate counter and under-cabinet lighting
- Recessed lighting
- Flows to Gym

GYM 20'3" X 16'8"

- Wall-to-wall carpeting
- Full wall of plate glass mirrors
- Sliding glass doors to patio and yard
- Recessed lighting
- Home gym machine excluded

BATH 7'10" X 5'11"

- Ceramic tile floor
- Vanity with solid surface top and seamless sink, wall sconce lighting
- Glass enclosed shower stall
- Kohler flush
- Window

UTILITY/STORAGE ROOM

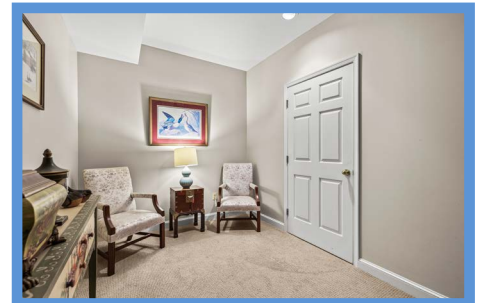
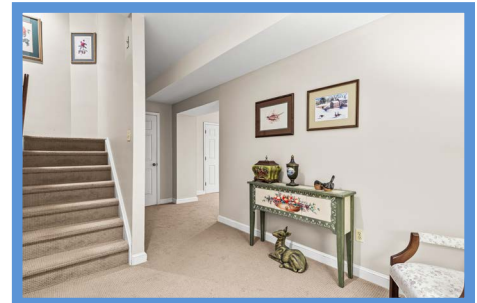
41'0" X 15'9"

- Dual access
- Unfinished
- Painted concrete floor
- York HVAC unit with oil-fired heat
- Two AO Smith electric water heaters- 2024
- Fuel-oil storage tank
- CentralLux central vac
- Metal storage shelving

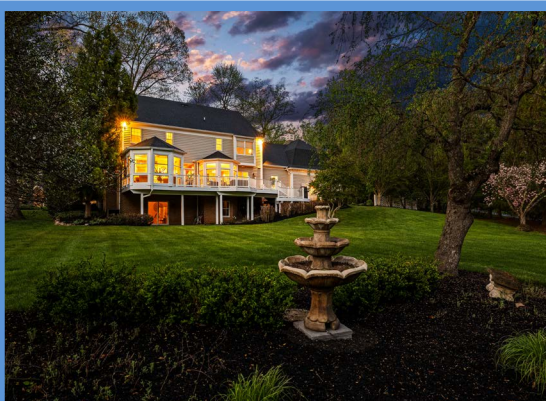
EXTERIOR

- Colonial design home custom built by Benhoff Builders
- Brick with beaded wood siding on back
- Classic dentil cornices
- Architectural asphalt roof
- Covered brick porch at main entry with classic columns and Chinese Chippendale roof balustrade
- Paver block front walkway
- Paver block walkway from driveway to deck
- Built-in landscape fountain off deck
- Engineered wood tiered deck with vinyl railings- access from Family Room, Kitchen and Sunroom
- Covered concrete patio at Lower Level
- Coach house garage doors
- Parking pad at Garage
- Professionally landscaped and maintained 3.1 acres

All information contained herein deemed reliable but not guaranteed by the Broker







*Hubble
Bisbee*

CHRISTIE'S
INTERNATIONAL REAL ESTATE

GREEN SPRING
STATION
410-321-1411

ANNAPOLIS
410-321-1833

